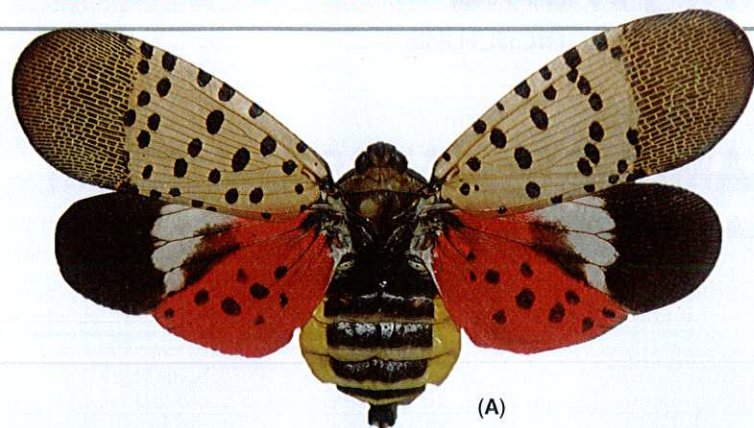


Pest Alert



Spotted Lanternfly

Lycorma delicatula (WHITE)
(Hemiptera: Fulgoridae)

The Spotted Lanternfly, *Lycorma delicatula* (White), an invasive planthopper, has been discovered in Berks County, Pennsylvania. It is native to China, India, Vietnam, and introduced to Korea where it has become a major pest. This insect attacks many hosts including grapes, apples, stone fruits, and tree of heaven and has the potential to greatly impact the grape, fruit tree, and logging industries. Early detection is vital for the protection of Pennsylvania businesses and agriculture.



*Photos courtesy of Park et al. 2009, Biological Characteristics of *Lycorma delicatula* and the Control Effects of Some Insecticides.

(A) Spotted Lanternfly showing the fore and hind wings (B) Resting against bark (C) Lateral view (D) Early nymphs (E) Late nymphs (F) Feeding on wild *Vitis* sp. (G) Weeping sap trail on tree (H) Egg mass covered in waxy coating (I) Old hatched egg mass on a trunk.

Identification:

The Spotted Lanternfly adult is approximately 1" long and 1/2" wide at rest. The forewing is grey with black spots and the wings tips are reticulated black blocks outlined in grey (A, B, C). The hind wings have contrasting patches of red and black with a white band (A). The legs and head are black; the abdomen is yellow with broad black bands. Immature stages are black with white spots, and develop red patches as they grow (D,E).

Hosts:

In the fall, adults congregate on tree of heaven (*Ailanthus altissima*) (F), willows (*Salix* sp.), and other trees, in groups of up to 20. Egg masses will be laid on medium to large trees, on trunk, branches, and limb bases. After hatching in the spring, nymphs will move off the tree and search out new hosts, including several kinds of agricultural crops. In Korea, it has been reported to attack 65 different species, 25+ of which are known to grow in Pennsylvania.

Signs and Symptoms:

Trees, such as tree of heaven and willow, will develop weeping wounds. These wounds will leave a greyish or black trail along the trunk (G). This sap will attract other insects to feed, notably wasps and ants. In late fall, adults will lay egg masses on host trees and nearby smooth surfaces like stone, outdoor furniture, vehicles, and structures. Newly laid egg masses have a grey mud-like covering which can take on a dry cracked appearance over time (H). Old egg masses appear as rows of 30-50 brownish seed-like deposits in 4-7 columns on the trunk, roughly an inch long (I).

What to do:

If you see egg masses, scrape them off, double bag them and throw them away. You can also place the eggs into alcohol or hand sanitizer to kill them. Please report all destroyed egg masses on our website listed below.

Collect a specimen: Specimens of any life stage can be turned in to the Pennsylvania Department of Agriculture's Entomology lab for verification. Directions for submission are on the reverse side of this alert.

Take a picture: A photograph of any life stage (including egg masses) can be submitted to Badbug@pa.gov.

Report a site: If you can't take a specimen or photograph, call the Automated Invasive Species Report Line at 1-866-253-7189 and leave a message detailing your sighting and contact information.



ENTOMOLOGY PROGRAM SAMPLE SUBMISSION FORM

*The Entomology Program at the Pennsylvania Department of Agriculture can provide identification.
Please complete this form to be submitted with the specimen(s).*

SPECIMEN REQUIREMENTS:

1. All specimens should be dead.
2. Most specimens should be placed in 70-80% Ethyl or Isopropyl Alcohol in a leak proof vial.
(Moths, Butterflies, and Mealy bugs should be frozen and placed in a hard plastic container with dry paper toweling)
3. The vial should be placed in a zipper style bag.
4. Specimens from different locations (if applicable) should be placed in different vials.
5. A completed sample submission form must accompany the vial/container.

REQUIRED INFORMATION:

Name of Submitter:

Contact Information: Telephone:

Email:

Address where specimen was collected:

Date Collected:

Plant Host/Habitat:

Name of Person Who Collected Specimen:

Comments/Special Instruction:

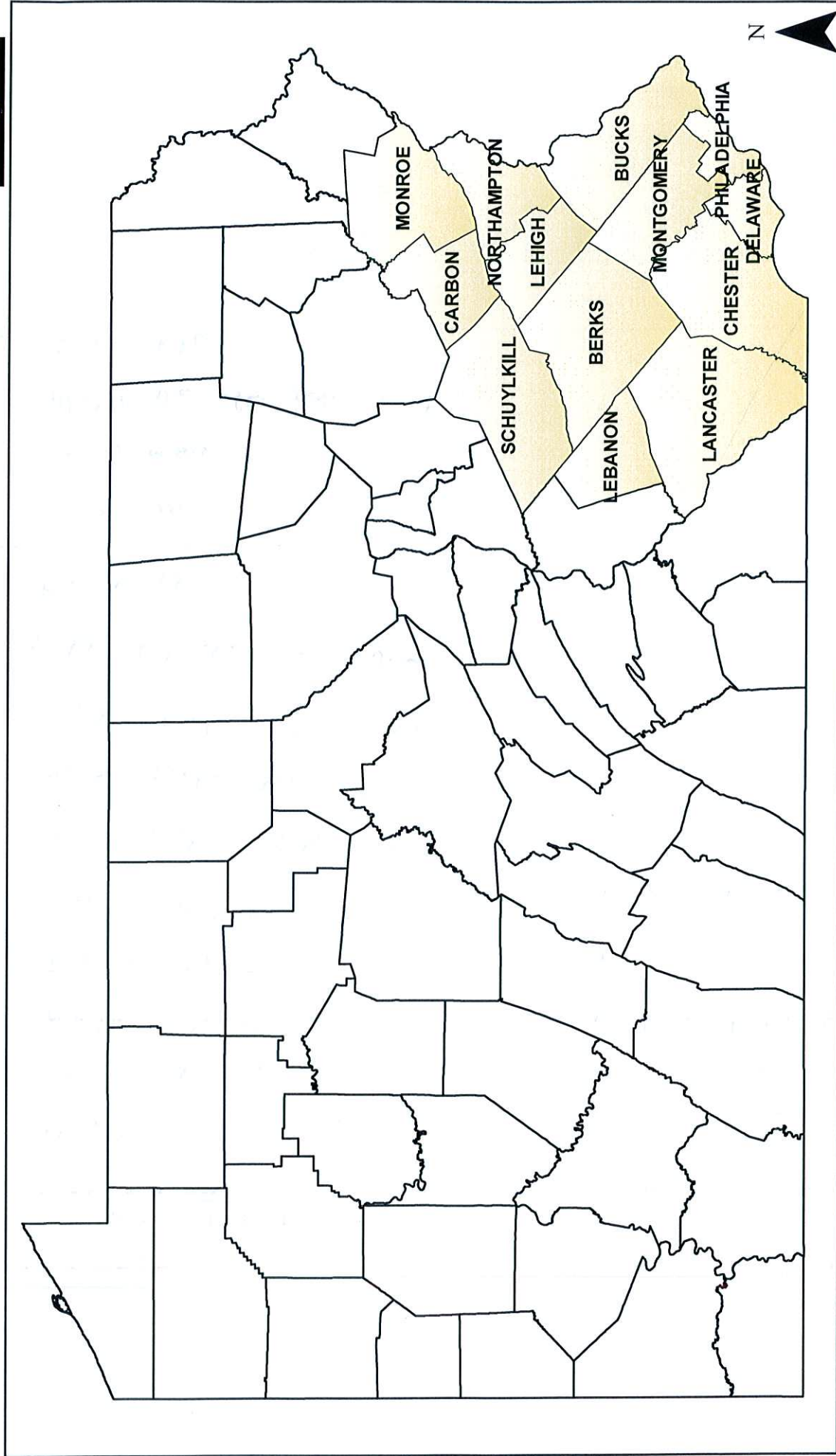
Mail the vial/container and completed form, or deliver in person to:

Pennsylvania Department of Agriculture
Entomology - Room 111
2301 North Cameron Street
Harrisburg, PA 17110

Contact: Sven-Erik Spichiger at 717-772-5229

Spotted Lanternfly Quarantine Map

Counties Under Quarantine As Of November 4, 2017



Spotted Lanternfly (SLF) Educational Resources Overview

March 1, 2018

Emelie Swackhamer, Penn State Extension, Montgomery County, exs33@psu.edu, 610-489-4315

Two important sources of information: (Google search is the easiest way to find them but URLs are below)
The Pennsylvania Department of Agriculture (PDA) and the Pennsylvania State University (PSU)

1. PDA SLF webpage: www.agriculture.pa.gov/spottedlanternfly

All of the PDA and PSU fact sheets are posted here.

PDA SLF MENU TABS	UNIQUE THINGS YOU CAN LOCATE
Program Information	PDA response, federal response, the latest quarantine and detection maps
Homeowners	Egg mass identification PowerPoint, PDA FAQ sheet
Quarantine	The quarantine order (6 page document), the quarantine order in plain language, compliance agreement participants, recommended BMP's for forest product industry, quarantine checklist for residents
Contractors	Information for companies who want to become vendors to assist with removal of <i>Ailanthus</i> and set up trap trees
Research	42 page report from the 2017 Technical Working Group (researchers)
Educational Resources	Coming soon- will include links to latest versions of fact sheets and other educational resources

2. Penn State SLF pages:

PSU College of Ag Sciences and Extension SLF landing page: <https://extension.psu.edu/spotted-lanternfly>

Spotlight Resources:

Article and pdf: [How You Can Comply with the Spotted Lanternfly Quarantine Regulations](#)

Article and pdf: [Tips for Handling Yard Waste in Quarantined Areas](#)

Article and pdf: [What to Do If You Find Spotted Lanternfly](#)

Article and pdf: [Spotted Lanternfly Management Calendar](#)

Article and pdf: [How to Eliminate or Control Spotted Lanternfly Adults](#)

Photo Gallery: [Spotted Lanternfly: What to Look For](#)

Learn Now Video: [Spotted Lanternfly Identification and Life Cycle](#)

PSU Extension SLF page: <https://extension.psu.edu/shopby/spotted-lanternfly>

To reach the Penn State Master Gardener Volunteers (who are trained to answer questions from residents)
<https://extension.psu.edu/county-offices>

- Penn State Extension, Berks County, 610-378-1327, 1238 County Welfare Road, Suite 110, Berks County Ag Center, Leesport, Pennsylvania, 19533-9709
- Penn State Extension, Bucks County, 215-345-3283, 1282 Almshouse Road, Neshaminy Manor Center, Doylestown, Pennsylvania, 18901-2896
- Penn State Extension, Carbon County, 570-325-2788, 529 Lentz Trail, Jim Thorpe, Pennsylvania 18229
- Penn State Extension, Chester County, 610-696-3500, 601 Westtown Road, Suite 370, Government Services Center, West Chester, Pennsylvania, 19380-0990
- Penn State Extension, Delaware County, 610-690-2655, 20 Paper Mill Road, Springfield, Pennsylvania, 19064
- Penn State Extension, Lancaster County, 717-394-6851, 1383 Arcadia Road, Room 140 Lancaster, Pennsylvania, 17601-3184
- Penn State Extension, Lebanon County, 717-270-4391, 2120 Cornwall Road, Suite 1, Lebanon, Pennsylvania, 17042-9777
- Penn State Extension, Lehigh County, 610-391-9840, 4184 Dorney Park Road, Room 104, Lehigh County Agricultural Center, Allentown, Pennsylvania, 18104-5798
- Penn State Extension, Monroe County, 570-421-6430, 724 Phillips Street, Suite 201, Stroudsburg, Pennsylvania, 18360-2224
- Penn State Extension, Montgomery County, 610-489-4315, 1015 Bridge Road, Suite H, Collegeville, Pennsylvania, 19426-1179
- Penn State Extension, Northampton County, 610-746-1970, 14 Gracedale Avenue, Nazareth, Pennsylvania, 18064

NOTICE

Order of Quarantine

DEPARTMENT OF AGRICULTURE

Order of Quarantine; Spotted lanternfly

Recitals.

- A. Spotted lanternfly, *Lycorma delicatula*, is a new pest to the United States and has been detected in the Commonwealth. This is a dangerous insect to forests, ornamental trees, orchards and grapes and not widely prevalent or distributed within or throughout the Commonwealth or the United States.
- B. The Plant Pest Act (Act)(act of December 16, 1992, P.L. 1228, No. 162)(3 P. S. §§ 258.1—258.27) empowers The Department of Agriculture (Department) to take various measures to detect, contain and eradicate plant pests. These powers include the authority, under section 258.21 of the Act, to establish quarantines to prevent the spread of plant pests within this Commonwealth (act of December 16, 1992, P.L. 1228, No. 162, § 21) (3 P.S. § 258.21).
- C. Under the authority of section 258.20 of the Act (related to pests declared public nuisance)(act of December 16, 1992, P.L. 1228, No. 162, § 20) (3 P.S. § 258.20) the Department may declare a plant pest to be a public nuisance when the Department determines a plant pest to be dangerous or destructive to the agriculture, horticulture or forests of this Commonwealth. For the reasons set forth in Paragraph A above, the Department declares *Lycorma delicatula* to be a public nuisance.
- D. Once a plant pest is declared a nuisance, “It shall be unlawful for any person knowingly to permit any plant pest so declared to exist on his premises or to sell, offer for sale, give away or move any plants, plant products or other material capable of harboring the pest.” (act of December 16, 1992, P.L. 1228, No. 162, § 20)(3 P.S. § 258.20)
- E. Where the Department detects or confirms any plant pest established in this Order of Quarantine – Spotted lanternfly, *Lycorma delicatula* – the place or area in which any of these plant pests are detected or confirmed shall be subject to this Order of Quarantine.
- F. The place or area in which the plant pest is detected or confirmed shall be added to this Order of Quarantine through an addendum delineating the specific location and geographic parameters of the area or place. Such addendum shall be published in the *Pennsylvania Bulletin* and enforcement of this Order of Quarantine with regard to that place or area shall become effective immediately upon such publication in the *Pennsylvania Bulletin*.

Definitions.

Associated equipment. Articles associated and moved with mobile homes and recreational vehicles, such as, but not limited to awnings, tents, tarps, outdoor furniture, and furniture covers, trailer blocks and trailer skirts.

Bark products. Products containing pieces of bark including bark chips, bark nuggets, bark mulch, and bark compost.

Landscaping, remodeling or construction waste. Includes living or dead plants, stones, lumber, deck boards, wood and drywall products, windows and insulation products, packing materials and any other flat surface product produced in the course of or resulting from landscaping, remodeling or construction activities, including associated equipment.

Mobile home. Any vehicle, other than a recreational vehicle, designed to serve, when parked, as a dwelling or place of business.

Outdoor household articles. Articles associated with a household that have been kept outside the home such as, but not limited to awnings, barbecue grills, grill covers, bicycles, boats, boat tarps and covers, dog houses, firewood, garden tools, hauling trailers, outdoor furniture and furniture covers, toys, stone or tile not permanently installed as a part of a residence or landscape feature, mobile fire pits, recreational vehicles and associated equipment, and tents.

Recreational vehicles. Articles associated with recreational vehicles, but not limited to, highway vehicles, including pickup truck campers, all-terrain vehicles (ATV), motor cycles, snow mobiles, boats, tarps and covers for all these vehicles, one-piece motor homes, and travel trailers, designed to serve as temporary places of dwelling.

ORDER

Under authority of section 21 of the Act (act of December 16, 1992, P.L. 1228, No. 162, § 21) (3 P. S. § 258.21), and with the Recitals and definitions previously listed incorporated into this Order of Quarantine by reference, the Department orders the following:

1. Establishment of Quarantine.

A quarantine is hereby established with respect to District Township and Pike Township in Berks County and any other area or place delineated in an addendum to this Order of Quarantine as set forth in Paragraphs E. and F. of the "Recitals" to this Order of Quarantine.

2. Regulated Articles and Limitations Imposed. The plant pest established by this Order of Quarantine - Spotted lanternfly, *Lycorma delicatula* - along with any material or object that may carry or spread the plant pest (the plant pest and its eggs and nymphs can exist on and be spread through conveyance of any object with a flat surface) such as the following objects or materials,

are considered regulated articles under this Order of Quarantine and may not be moved out of the quarantined area, unless done in accordance with Paragraph 3 of this Order of Quarantine:

- Any living life stage of the Spotted lanternfly, *Lycorma delicatula*.
- Brush, debris, bark, or yard waste.
- Landscaping, remodeling or construction waste
- Logs, stumps or any tree parts
- Firewood of any species.
- Packing materials, such as wood crates or boxes.
- All plants and plant parts. This shall include, but is not limited to, all live, dead, infected or non-infected trees, nursery stock, budwood, scionwood, green lumber, firewood, perennial plants, garden plants and produce and other material living, dead, cut, fallen including stumps, roots, branches, mulch, and composted and uncomposted chips.
- Outdoor household articles including recreational vehicles, lawn tractors and mowers, mower decks, grills, grill and furniture covers, tarps, mobile homes, tile, stone, deck boards, mobile fire pits, any associated equipment and trucks or vehicles not stored indoors.
- Grapevines for decorative purposes or as nursery stock.
- Any other article or means of conveyance when it is determined by an inspector to present a risk of spread of Spotted lanternfly, *Lycorma delicatula* in any life stage and is in proximity to such articles and the articles presenting a high risk of artificial spread and the person in possession thereof has been notified.

3. *Movement of regulated articles from quarantined areas.* A regulated article, delineated in Paragraph 2 of this Order of Quarantine, may be moved from a quarantined area only under the following circumstances:

a. *With* a valid certificate or limited permit attached and issued in accordance with the provisions of Paragraph 4 or Paragraph 6 of this Order of Quarantine. The valid certificate or limited permit shall be attached to the regulated article(s) as set forth in Paragraph 5 of this Order of Quarantine.

b. *Without* a certificate or limited permit attached and issued in accordance with the provisions of Paragraph 4 of this Order of Quarantine if the regulated article originates outside the quarantined area and is moved intrastate through the quarantined area under the following conditions:

- i. The points of origin and destination are indicated on a waybill accompanying the regulated article; and
- ii. The regulated article, if moved into the quarantined area during the period of April through December and is moved in an enclosed vehicle or is completely covered, such as by a tarp or full shrink wrapping, to prevent exposure to Spotted lanternfly, *Lycorma delicatula* or access to the regulated article by any of the plant pest established in this Order of Quarantine and the tarp or shrink wrapping is destroyed

by burning prior to leaving the quarantined area or is left behind in the quarantined area; and

- iii. The regulated article is moved directly through the quarantined area without stopping (except for refueling or for traffic conditions, such as traffic lights or stop signs), or has been stored, packed or handled at locations approved by the Department inspector as not posing a risk of infestation by or exposure to Spotted lanternfly, *Lycorma delicatula*; and
- iv. No common carrier or other person may move intrastate from any generally infested area any regulated article or outdoor household articles as defined; and
- v. The article has not been combined or commingled with other articles so as to lose its individual identity.

4. *Obtaining a Certificate or Limited Permit from the Department for Movement of Articles.*

The Department or a person operating under a compliance agreement, as set forth in Paragraph 6 of this Order of Quarantine, may issue a certificate or stamp authorizing the movement of a regulated article, delineated in Paragraph 2 of this Order of Quarantine, if it is satisfied that all of the following criteria are accurate and will be met:

a. The regulated article is to be moved in compliance with the provisions of this Order of Quarantine and any additional emergency conditions that the Department may impose under the Plant Pest Act in order to prevent the artificial spread of Spotted lanternfly, *Lycorma delicatula*; and

b. The regulated article is either of the following:

i. The regulated article is determined to be free of Spotted lanternfly, *Lycorma delicatula*, based on inspection; or the regulated article has been grown, produced, manufactured, stored or safeguarded during the months of April – December in a manner that, in the judgment of the Department, prevents the regulated article from presenting a risk of spreading Spotted lanternfly, *Lycorma delicatula*; or

ii. The regulated article is to be moved to a specified destination for specific processing, handling or utilization (the destination and other conditions to be listed on the advance written permission), and the Department has determined this movement will not result in the spread of Spotted lanternfly, *Lycorma delicatula* because the plant pests will have been destroyed by the specific processing, handling or utilization process undertaken and completed prior to movement of the regulated article.

5. *Documentation to Accompany Regulated Articles in Movement from a Quarantined Area.* If a regulated article(s), delineated in Paragraph 2 of this Order of Quarantine, is to be moved from a quarantined area, the regulated article(s) shall be plainly marked with the name and address of the consignor and any person utilized in processing the regulated article for movement and the name and address of the consignee and must have a copy of the applicable Department-issued or

Department-authorized (by compliance agreement as described in Paragraph 6 of this Order of Quarantine) certificate or limited permit securely attached to each regulated article itself or the container carrying each regulated article and such certificate or limited permit shall be attached to the consignee's copy of the accompanying waybill at all times during movement. The description of the regulated article(s) on the certificate or limited permit, and on the waybill, shall be sufficient to identify each regulated article. The consignor shall be responsible for compliance with such documentation standards and shall assure the carrier furnishes the certificate or limited permit authorizing the movement of the regulated article to the consignee at the destination of the shipment. The consignor, carrier and the consignee shall keep a copy of the certificate or limited permit. All such records shall be maintained by the consignee, consignor and carrier for a period of 2 years. Such records shall be made available to the Department for inspection upon request.

6. *Compliance Agreements.* The Department will consider entering into a compliance agreement with any person that demonstrates an understanding of the requirements of this Order of Quarantine and satisfies the Department that said person is capable of issuing certificates or limited permits in accordance with the requirements of this Order of Quarantine. The Department shall either provide blank certificates and limited permits to a person operating under a compliance agreement or authorize reproduction of the certificates or limited permits on shipping containers, or both, as determined by the Department at its sole discretion. These certificates and limited permits may then be completed and used, as needed, for the movement of regulated articles that have met all of the requirements of Paragraph 4 of this Order of Quarantine. Originals of each certificate or limited permit issued by a person operating under a compliance agreement shall be kept by said person for a period of 2 years and shall be made available to the Department upon request.

7. *Cancellation of a Certificate, Limited Permit or Compliance Agreement.* Any certificate, stamp, or limited permit or any Compliance Agreement may be canceled orally or in writing by the Department whenever the Department determines that the holder of the certificate or limited permit or the Compliance Agreement has not complied with a provision of the Act, regulations or this Order of Quarantine. If the cancellation is oral, the cancellation will become effective immediately, and the cancellation and the reasons for the cancellation will be confirmed in writing as soon as circumstances permit.

8. *Federal Requirements for Interstate Movement of Articles.* This Order of Quarantine is distinct from, and in addition to, any Federal statute, regulation or quarantine order addressing the movement of articles from the quarantined area or this Commonwealth.

9. *Contacting the Department.* A person seeking information about the requirements of this Order of Quarantine, or a limited permit or certificate for movement of a regulated article(s), or a compliance agreement for intrastate movement of a regulated article(s), shall contact the Department at: Pennsylvania Department of Agriculture, Bureau of Plant Industry, Attention: Dana Rhodes, 2301 North Cameron Street, Harrisburg, PA 17110-9408, (717) 772-5205, danrhodes@pa.gov.

11. *Violations.* In accordance with the provisions of section 258.22 of the Act (act of December 16, 1992, P.L. 1228, No. 162, § 22)(3 P.S. § 258.22) it shall be unlawful to violate or fail to comply with any provision of the Act, regulations or this Order of Quarantine.

12. *Criminal and Civil Penalties.* In accordance with the provisions of the Act, at sections 258.23 and 258.24 (act of December 16, 1992, P.L. 1228, No. 162, §§ 258.23, 258.24)(3 P.S. §§ 258.23 and 258.24), a person who violates this Order of Quarantine may face summary criminal prosecution carrying up to 90 days imprisonment and a fine of up to \$300 with respect to each violation. In addition, a person who violates this Order of Quarantine may be assessed a civil penalty of up to \$20,000 with respect to each violation.

13. *Cooperation with other agencies.* As authorized by section 258.26 of the Act (act of December 16, 1992, P.L. 1228, No. 162, § 258.26)(3 P.S. § 258.26), the Department will consult with other State agencies, Federal agencies, Pennsylvania State University, and the Pennsylvania State University Cooperative Extension with respect to the most efficacious measures to survey for and detect Spotted lanternfly, *Lycorma delicatula* to slow the spread or eradicate these plant pests.

14. *Effective Date.* This quarantine is effective upon signature and shall be published in the *Pennsylvania Bulletin* and shall remain in effect until rescinded by subsequent order.