

What is an Illicit Discharge?



An illicit discharge is "any discharge to an MS4 (Municipal Separate Storm Sewer System) that is not composed entirely of stormwater..." Illicit discharges are considered "illicit" because MS4s are not designed to accept, process, or discharge such non-stormwater wastes.

Paints, septic system discharges, gray water (i.e. washing machines), grease, waste oil, etc., are examples of illicit discharges.

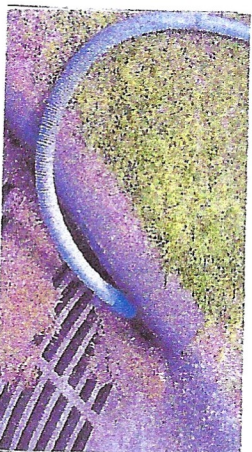
MS4s are directly connected to a water-body and do not receive any type of treatment before being discharged to the receiving water bodies. Since this water is untreated, it is vital that only storm-water be discharged from MS4s.

There are a few exceptions. To learn what they are, go to the Township website, click on Ordinance - Chapter 18 subsection 1102.B

What Can You Do?

By Practicing healthy household habits, homeowners can keep common pollutants like pesticides, pet waste, grass clippings, and automotive fluids off the ground and out of stormwater systems. Adopt these healthy household habits and help protect lakes, streams, rivers, wetlands, and coastal waters.

- ◆ Never dump anything down storm drains or in streams
- ◆ Use fertilizers sparingly, sweep up driveways, sidewalks and gutters
- ◆ Never blow grass into street, which can make its way into the storm drain
- ◆ Use least toxic pesticides
- ◆ Dispose of household hazardous waste, paints, used auto fluids and batteries at designated collection or recycling locations
- ◆ Take your car to the car wash instead of washing it in the driveway
- ◆ Check your car for leaks and recycle your motor oil
- ◆ Pick up after your pet
- ◆ Pick up trash in your area and dispose of properly so it doesn't enter a storm drain



Why Should You Care?



Illicit discharge into stormwater systems produce negative impacts by carrying pollutants to surface waters, the same surface waters we use for swimming, fishing, and providing drinking water.

Illicit Discharges along with polluted stormwater runoff are the greatest threat to clean water.

Where can you find more information?

Go to the following websites:

www.epa.gov/

www2.epa.gov/learn-issues/learn-about-water

www2.epa.gov/aboutepa/epa-pennsylvania

www.portal.state.pa.us

Type in Keyword: Stormwater